



ELPRIMA KENCANA

Improvement & Achievement



COMPANY PROFILE



ELPRIMA KENCANA

Who We Are

Who we are, The Company have started since 2000 as a noise control specialized contractor such as Sound Attenuator & Muffler for Genset, AHU & Fan. Due to the rapid construction growth in Indonesia, in the year 2010 we started to develop new line of bussiness as a Contractor for Installing the genset in our portfolio.

Our Philosophy

Sustainability Improvement and Achievement

Our Mission

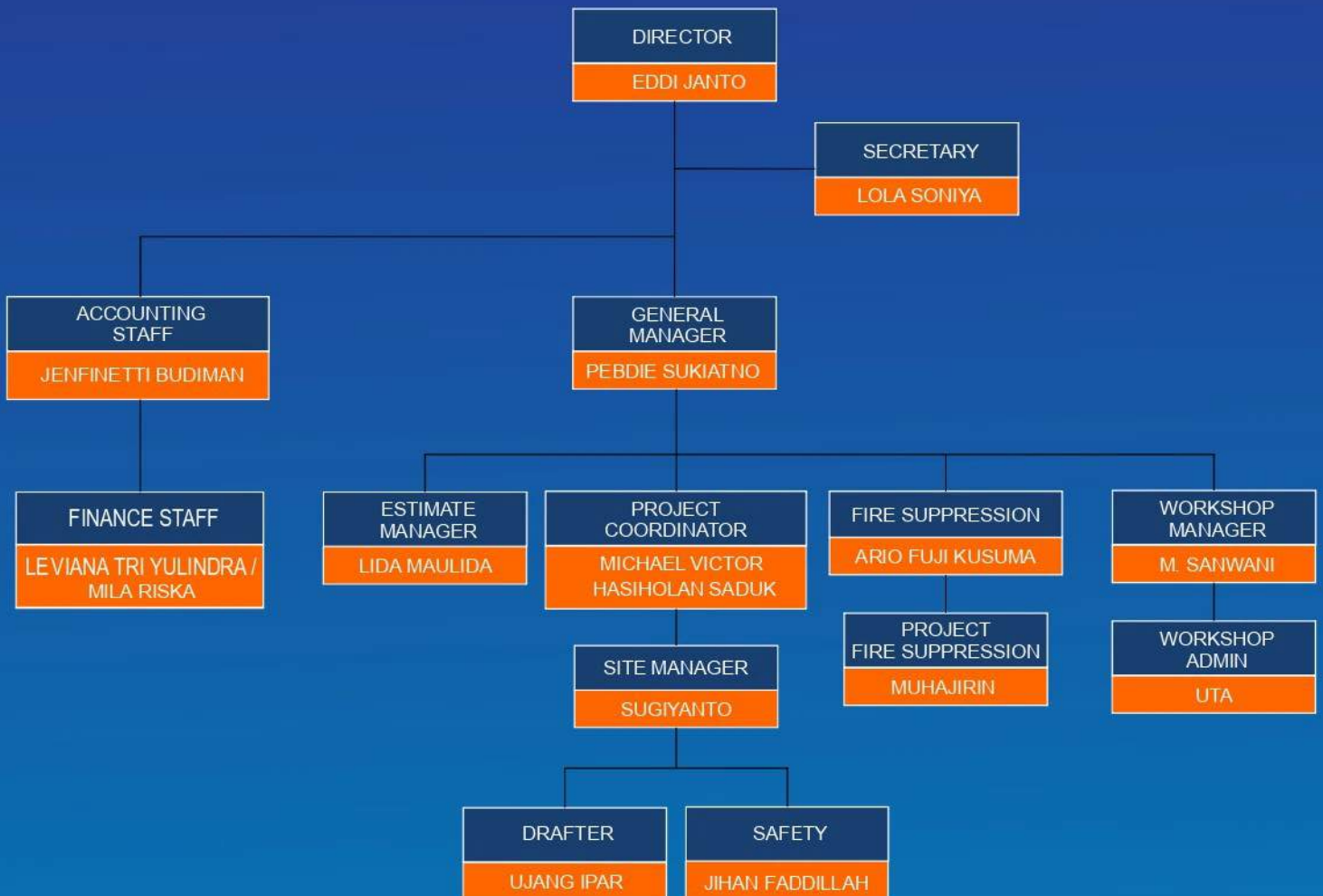
To be the recognized leader and preferred provider for our valued customers by delivering unequaled products and services through a highly qualified staff of professionals with total commitment to integrity and excellence.

What We Do

- Supply
- Installation
- Testing & Commissioning
- General Inspection & Recommendation
- Service & Maintenance



STRUKTUR ORGANISASI PERUSAHAAN

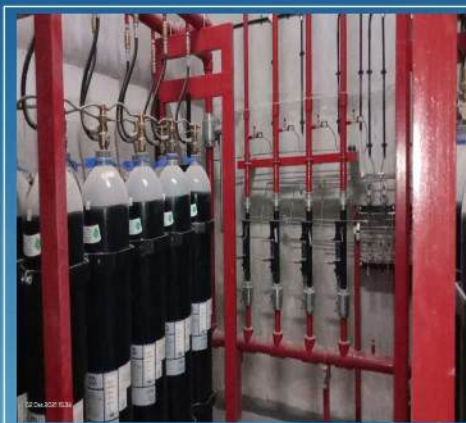


PT. ELPRIMA KENCANA PROJECT REFERENCE - GENSET INSTALLATION



NAMA PROYEK	PEKERJAAN
1. Data Center (NTT)	: Install Genset Enclosure 8 x 3000kVA Cat Engine.
2. Bank Central Asia Tbk	: Install Genset 3 x 1500KVA Caterpillar.
3. PLTD Somahode	: Install Genset 1 x 2000KVA Caterpillar.
4. PLTD Langgur	: Install Genset 2 x 2000KVA Caterpillar.
5. PT. HM Sampoerna Tbk	: Supply & Install Intake Attenuator, Discharge Attenuator and Muffler Engine CAT 3516B (2000kVA x 6 unit)
6. EDGE Kuningan	: Supply Storage Tank Double Skin Kapasitas 12.000 Ltr
7. DCI JK2	: Supply Storage Tank Double Skin Kapasitas 72.000 Ltr
8. DCI JK3	: Supply Storage Tank Double Skin Kapasitas 50.000 Ltr

PT. ELPRIMA KENCANA OTHERS PROJECT REFERENCE



NAMA PROYEK	PEKERJAAN
1. Sanofi Building Jakarta	: Erection Chiller unit 7500 TR.
2. Sanofi Building Jakarta	: Pemasangan Pipa Chiller Plant Cap. 750 TR, main pipe line BS pipe sch. 20 dia. 300mm, Insulated. Complete with dosing pump for chemical treatment.
3. Lembaga Arsip Nasional	: Pemasangan CO2 Fire Suppression System
4. PDG Data Center	: Pemasangan Pipa Pre Action Sprinkler dan Novex Fire Suppression System
5. Sudirman 78	: Pemasangan CO2 & Inergen Fire Suppression System
6. Astra Honda Motor Cibitung	: Pemasangan CO2 Fire Suppression System



PROJECT LIST FOR GENSET INSTALLATION & OTHER

No	Project	Location	Contractor	Scope of Work
1	NTT JKT3 - (Phase 1, Phase 2 & Phase 3)	Cibitung	PT. Trakindo Utama	* Install Fuel System for CAT Genset : 2 x 3000kVA & 4 x 2500kVA (Phase 1) 2 x 3000kVA (Phase 2) 1 x 3000kVA (Phase 3)
2	NTT JKT2 - Annex	Kuningan	PT. Trakindo Utama	* Install Fuel System for CAT Genset 5 x 2400 kW
3	Equinix - Data Center	Kuningan	PT. Atoz Teknik Sejahtera	* Install Fuel System for Cummins Genset 4 x 2250kVA
4	Bank Central Asia Tbk	Alam Sutera	PT. Trakindo Utama	* Install Genset 3 x 1500kVA Caterpillar
5	PLTD Somahode	Sofifi Halmahera Utara	PT. Trakindo Utama	* Install Genset 1 x 2000kVA Caterpillar
6	PLTD Langgur	Langgur Maluku Utara	PT. Trakindo Utama	* Install Genset 2 x 2000kVA Caterpillar
7	PT. HM Sampoerna Tbk	Surabaya	PT. Trakindo Utama	* Supply & Install Intake Attenuator, Discharge Attenuator and Muffler Engine CAT 3516B (2000kVA x 6 unit)
8	EDGE Kuningan	Jakarta	PT. Trakindo Utama	* Supply Storage Tank Double Skin Kapasitas 12.000 Ltr
9	DCI JK2	Cibitung	PT. Trakindo Utama	* Supply Storage Tank Double Skin Kapasitas 72.000 Ltr
10	DCI JK3	Cibitung	PT. Trakindo Utama	* Supply Storage Tank Double Skin Kapasitas 50.000 Ltr
11	Telkom Malang	Malang	PT. Trakindo Utama	* Install Genset 2 x 1500kVA
12	STO Meruya	Jakarta	PT. Trakindo Utama	* Install Genset 1 x 1500kVA



PROJECT LIST FOR TYCO FIRE WATERMIST SYSTEM & MECHANICAL PRODUCT

No	Project	Location	Contractor	Scope of Work
1	Space DC JEK 2	Jakarta		* Supply & Install Watermist System (Aquamist - Sonic System)
2	Data Center Irish Phase 1 & Phase 2	Cikarang	PT. Semicon Internusa PT. Trakindo Utama	* Supply & Install Watermist System (Simplex Detection System & Tyco Aquamist)
3	Data Center Edgeconnex	Cikarang	PT. Sanggar Sarana	* Supply & Install Watermist System (Multron Detection System & Tyco Aquamist)
4	Data Center RDK Phase 1 & Phase 2	MT Haryono Cawang Jakarta	PT. Altrak 1978	* Supply & Install Watermist System (Honeywell Detection System & Tyco Aquamist)
5	Data Center K2 Phase 1	Cikarang	PT. Conductorjasa Suryapersada	* Supply & Install Watermist System (Honeywell Detection System & Tyco Aquamist)
6	BDX - CGK 1	Jakarta	PT. Altrak 1978	* Supply & Install Watermist System (Simplex Detection System & Tyco Aquamist)
7	BDX - CGK 4	Jatiluhur	PT. Altrak 1978	* Supply & Install Watermist System (Simplex Detection System & Tyco Aquamist)
8	JKT 02 - Phase 2 & Phase 3	Karawang	S.H. Stainless Steel Contractor Pte Ltd	* Installation Watermist System (Van Guard Detection System & RG System Watermist)
9	JKT 05 - Phase 2	Cikarang	S.H. Stainless Steel Contractor Pte Ltd	* Installation Watermist System (Van Guard Detection System & RG System Watermist)



PROJECT LIST FOR LOAD BANK

YEAR 2022-2024

No	Project	Location	Contractor	Scope of Work
1	AWS - PT. Amazon Data Services Indonesia	Cakung, Cikarang & Karawang	PT. Trakindo Utama	* Rental Load bank 3000kVA, 2400kW (CGK063, CGK064, CGK065 ROMP2)
2	AWS CGK063 ROMP 2	Karawang	PT. Trakindo Utama	* Rental Load Bank 3000kVA, 2400kW (add L3 & L4)
3	AWS - Additional Rental Load bank & Genset AWS 064-L4 (PT. Amazon Data Services Indonesia)	Cikarang	PT. Trakindo Utama	* Rental Load bank 3000kVA & Rental Genset 50kVA for L4 test
4	AWS - Additional Rental Load bank & Genset AWS 065-L3 (PT. Amazon Data Services Indonesia)	Cikarang	PT. Trakindo Utama	* Rental Load bank 3000kVA & Rental Genset 50kVA for L3 test
5	AWS CGK065 for L4 - PT. Amazon Data Services Indonesia	Cikarang	PT. Trakindo Utama	* Rental Load bank 3000kVA & Rental Genset 50kVA for L4 test
6	AMNT CWA-01 REPEAT ORDER - PT. Amman Minerals Nusa Tenggara	Cikarang	PT. Trakindo Utama	* Rental load bank 100kVA & Rental loadbank 50kVA
7	AWS ROMP03 - PT. Amazon Data Services Indonesia	Cikarang	PT. Trakindo Utama	* Rental load bank test 3000kVA
8	AWS ROMP03 - PT. Amazon Data Services Indonesia	Cikarang	PT. Trakindo Utama	* Rental load bank 3000kVA, 2400kW - L1/FAT Test
9	AWS CGK 065	BSD - Tangerang	PT. Trakindo Utama	* Biaya load bank 3000kW - 8600658929
10	AWS CGK 063 ROMP03 - PT. Amazon Data Services Indonesia	Karawang Timur	PT. Trakindo Utama	* Rental load bank 3000kVA, 2400kW for L3 test CGK 063 (L3 site 063)
11	AWS CGK064 ROMP03 - PT. Amazon Data Services Indonesia	Cikarang Pusat	PT. Trakindo Utama	* Rental load bank 3000kVA, 2400kW for L3 test CGK 064 (L3 site 064)
12	AWS CGK065 ROMP03 - PT. Amazon Data Services Indonesia	Karawang Barat	PT. Trakindo Utama	* Rental load bank 3000kVA, 2400kW for L3 test CGK 065 (L3 site 065)
13	AWS CGK063 ROMP03 - PT. Amazon Data Services Indonesia	Karawang Barat	PT. Trakindo Utama	* Rental load bank 3000kVA, 2400kW for L4 test CGK 063 (L3 site 063)
14	AWS CGK065 ROMP03 - PT. Amazon Data Services Indonesia	Karawang Barat	PT. Trakindo Utama	* Rental load bank 3000kVA, 2400kW for L4 test CGK 065 (L4 site 065)
15	AWS CGK064 ROMP03 - PT. Amazon Data Services Indonesia	Cikarang Pusat	PT. Trakindo Utama	* Rental load bank 3000kVA, 2400kW for L4 test CGK 064 (L4 site 064)
16	AWS CGK064 ROMP03 - PT. Amazon Data Services Indonesia	Cikarang Pusat	PT. Trakindo Utama	* Rental load bank 3000kVA, 2400kW
17	AWS ROMP03 - PT. Amazon Data Services Indonesia	Cakung	PT. Trakindo Utama	* Rental load bank 3000kVA, 2400kW for L1
18	AWS CGK063 & CGK065 ROMP03 - PT. Amazon Data Services Indonesia	Cakung	PT. Trakindo Utama	* Rental load bank 3000kVA, 2400kW
19	AWS CGK063 ROMP3 - PT. Amazon Data Services Indonesia	Cakung	PT. Trakindo Utama	* Rental load bank 3000kVA, 2400kW (Kerja tambah PO. 4800042940)
20	AWS CGK063 ROMP3_2X3516E	Jakarta	PT. Trakindo Utama	* Additional Work Rental Load Bank 3000kVA, 2400kW
21	AWS CGK064	Cikarang	PT. Trakindo Utama	* Rental Load Bank 3000kVA & Genset 50kVA - AWS64
22	AWS CGK064 ROMP3	Jakarta	PT. Trakindo Utama	* Rental Loadbank 3000kVA, 2400kW Testing Equipment - L3 & L4 site 064
23	AWS CGK065 ROMP03	Jakarta	PT. Trakindo Utama	* Kerja Tambah Rental Loadbank 3000kVA, 2400kW Testing Equipment - (With PLC fitur & External Genset L3 & L4 Test)
24	AWS 065	Jakarta	PT. Trakindo Utama	* Rental Load Bank 3000kVA, 2400kW - Testing Equipment

Sonic Noise Control Products

SONIC-SMI SERIES MUFFLER

SMI series unit are an absorptive type mufflers. These mufflers are use to achieve moderate acoustics performance and where a very minimum back pressure allowed, since they are designed with straight trough bore. Muffler can be applied on all gas exhaust applications



SONIC - SMC SERIES MUFFLER

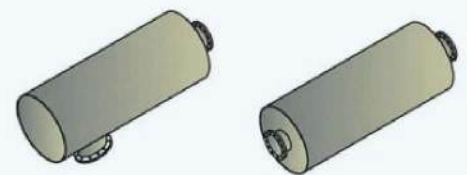
SMC series are a combine performance of absorptive and reactive muffler (super critical muffler). These multi-chambers muffler will provide us with the highest attenuation of noise at all frequency, and give more than 30 dBA overall reduction. Muffler can be applied on all gas exhaust applications, where acoustic and air flow require maximum insertion loss performance and high pressure application.



Sampoerna pandaan project 6x2000 KVA

MUFFLER CONSTRUCTION

All series of mufflers are manufactured from high quality carbon steel plate (SS400) and provide with a good welding technique, to ensure the product meets with the most demanding installation. Material infill for absorbing the noise inside the chambers is using a high density rockwool and covered with heavy duty perforated steel sheet.



We also manufacture large size to meet your requirement.

SONIC RECTANGULAR DUCT SILENCER

Sonic duct silencer (sound attenuator) provide predictable attenuation and known airflow pressure loss characteristic. The silencer is used to control the passage of noise along ventilation ducts and openings. Typical application includes building plant room (AHU, Generator room, etc), theatres, radio and television studios.

All units are rigidly constructed and consist of a galvanized sheet metal casing, containing a series of centre and side splitters (to reduce noise flanking). Acoustic splitters have a radiused nose (semicircular nose) or trigonal nose fairing to give a bellmouth entry to all airways resulting a low pressure drop and regeneration noise



Argo PANTES PROJECT - Intake Sound Attenuators
MM 2100 Cibitung - Bekasi

PT. ELPRIMA KENCANA

PHOTO REFERENCE - GENSET INSTALLATION

PROJECT : DATA CENTER NTT
LOKASI : CIBITUNG
SCOPE OF WORK : INSTALL GENSET ENCLOSURE 8 X 3000KVA CAT ENGINE



PT. ELPRIMA KENCANA

PHOTO REFERENCE - GENSET INSTALLATION

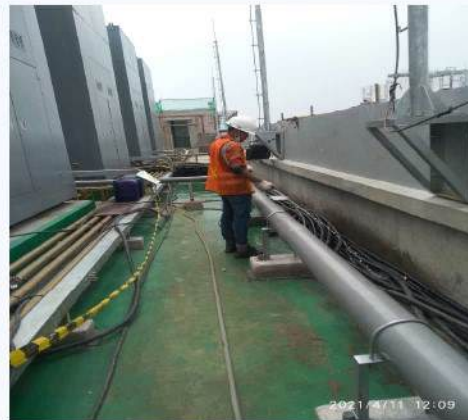
PROJECT : DATA CENTER NTT
LOKASI : CIBITUNG
SCOPE OF WORK : INSTALLATION FUEL PUMP SUPPLY AND POLISHING



PT. ELPRIMA KENCANA

PHOTO REFERENCE - GENSET INSTALLATION

PROJECT : DATA CENTER NTT
LOKASI : CIBITUNG
SCOPE OF WORK : INSTALLATION PIPE FUEL SUPPLY AND RETURN



PT. ELPRIMA KENCANA

PHOTO REFERENCE - GENSET INSTALLATION

PROJECT : BANK CENTRAL ASIA TBK
LOKASI : ALAM SUTERA - TANGERANG
SCOPE OF WORK : SUPPLY & INSTALL GENSET 3 X 1500KVA CATERPILLAR.



PT. ELPRIMA KENCANA

PHOTO REFERENCE - GENSET INSTALLATION

PROJECT : PLTD SOMAHODE
LOKASI : SOFIFI - HALMAHERA UTARA
SCOPE OF WORK : SUPPLY & INSTALL GENSET 1 X 2000KVA CATERPILLAR.



PT. ELPRIMA KENCANA

PHOTO REFERENCE - GENSET INSTALLATION

PROJECT : PLTD LANGGUR
LOKASI : LANGGUR - MALUKU TENGGARA
SCOPE OF WORK : SUPPLY & INSTALL GENSET 2 X 2000KVA CATERPILLAR



PT. ELPRIMA KENCANA

PHOTO REFERENCE - GENSET INSTALLATION

PROJECT : PT. HM SAMPOERNA TBK
LOKASI : SUKOREJO PLANT – POWER HOUSE EAST JAVA – INDONESIA
SCOPE OF WORK : SUPPLY & INSTALL INTAKE ATTENUATOR & DISCHARGE ATTENUATOR AND MUFFLER ENGINE CAT 3516B (2000KVA X 6 UNIT)



PT. ELPRIMA KENCANA

PHOTO REFERENCE - GENSET INSTALLATION

PROJECT : EDGE KUNINGAN
LOKASI : KUNINGAN
SCOPE OF WORK : SUPPLY STORAGE TANK DOUBLE SKIN KAPASITAS 12.000 LTR



PT. ELPRIMA KENCANA

PHOTO REFERENCE - GENSET INSTALLATION

PROJECT : DCI JK2
LOKASI : CIBITUNG
SCOPE OF WORK : SUPPLY STORAGE TANK DOUBLE SKIN KAPASITAS 72.000 LTR



PT. ELPRIMA KENCANA

PHOTO REFERENCE - GENSET INSTALLATION

PROJECT : DCI JK3
LOKASI : CIBITUNG
SCOPE OF WORK : SUPPLY STORAGE TANK DOUBLE SKIN KAPASITAS 50.000 LTR



PT. ELPRIMA KENCANA OTHERS PROJECT - PHOTO REFERENCE

PROJECT : SANOFI BUILDING JAKARTA
LOKASI : JAKARTA
SCOPE OF WORK : ERECTION CHILLER UNIT 7500 TR.



PT. ELPRIMA KENCANA OTHERS PROJECT - PHOTO REFERENCE

PROJECT : SANOFI BUILDING JAKARTA
LOKASI : JAKARTA
SCOPE OF WORK : PEMASANGAN PIPA CHILLER PLANT CAP. 750 TR, MAIN PIPE LINE BS PIPE SCH. 20 DIA. 300MM, INSULATED. COMPLETE WITH DOZING PUMP FOR CHEMICAL TREATMENT.



PT. ELPRIMA KENCANA OTHERS PROJECT - PHOTO REFERENCE

PROJECT : SPACE DC
LOKASI : JAKARTA
SCOPE OF WORK : WATERMIST TYCOFOG FOR 4 X 2500 KVA MTU GENSET ENCLOSURE.



PT. ELPRIMA KENCANA OTHERS PROJECT - PHOTO REFERENCE

PROJECT : SUDIRMAN 78
LOKASI : JAKARTA
SCOPE OF WORK : PEMASANGAN CO2 & INERGEN FIRE SUPPRESSION SYSTEM



PT. ELPRIMA KENCANA OTHERS PROJECT - PHOTO REFERENCE

PROJECT : SUDIRMAN 78
LOKASI : JAKARTA
SCOPE OF WORK : PEMASANGAN INERGEN FIRE SUPPRESSION SYSTEM



PT. ELPRIMA KENCANA OTHERS PROJECT - PHOTO REFERENCE

PROJECT : PDG DATA CENTER
LOKASI : CIBITUNG
SCOPE OF WORK : PEMASANGAN PIPA PRE ACTION SPRINKLER DAN
NOVEX FIRE SUPPRESSION SYSTEM



PT. ELPRIMA KENCANA OTHERS PROJECT - PHOTO REFERENCE

PROJECT : EUROASIATIC
LOKASI : TAMAN TEKNO BSD
SCOPE OF WORK : PEMASANGAN INERGEN & CO2 FIRE SUPPRESSION SYSTEM





ELPRIMA KENCANA

PT. ELPRIMA KENCANA

Alamat :

Komplek Rukan Graha Arteri Mas Blok E6 No.31
Jl. Panjang, Kel. Kedoya Selatan - Kec. Kebon Jeruk
Jakarta Barat 11520 - Indonesia

Jl. L.Suprpto Graha Cempaka Mas Blok D. No. 17
Kel. Sumur Batu - Kec. Kemayoran
Jakarta Pusat 10640 - Indonesia

Telp. : 021-583-54550,
Fax : 021-583-54551
Email : elprimajkt@gmail.com
elprimakencana@gmail.com
Website : www.elprimakencana.com